

# Clarke®



## RECHARGEABLE LED WORKLIGHT MODEL NO: SMD2000R

PART NO: 4003644

## USER INSTRUCTIONS

UK  
CA | CE



ORIGINAL INSTRUCTIONS

GC-02/25

---

## INTRODUCTION

---

Thank you for purchasing this CLARKE portable worklight.

Before attempting to use this product, please read this manual thoroughly and follow the instructions carefully. In doing so you will ensure the safety of yourself and that of others around you, and you can look forward to your purchase giving you long and satisfactory service.

---

## TECHNICAL SPECIFICATIONS

---

Model	SMD2000R
Charger input voltage	230V-50Hz
Operating voltages	5VDC - 2A
Charging cable length	1M
LED Wattage consumption	20W
Lithium battery	3.7V DC /8800 mAh
Efficiency	100 Lm/W
Lighting source	SMD 40LED array
Light output (luminous flux)	2000 lumens
Colour temperature (rendering)	6500 K
Ingress Protection (IP rating)	IP54
Operating temperatures	0 to +45°C
Dimension (L x W x H)	225 x 175 x 265 mm
Weight	1.2 Kg

---

## GUARANTEE

---

This product is guaranteed against faulty manufacture for a period of 12 months from the date of purchase. Please keep your receipt which will be required as proof of purchase.

This guarantee is invalid if the product is found to have been abused or tampered with in any way or not used for the purpose for which it was intended.

Faulty goods should be returned to their place of purchase, no product can be returned to us without prior permission. This guarantee does not effect your statutory rights.

---

## SAFETY PRECAUTIONS

---

1. **DO NOT** look directly into the lamp when switched on as this can damage your eyes.
2. **DO NOT** use this worklight if it has a damaged lens or casing.
3. **DO NOT** touch the lamp when your hands are wet.
4. **DO NOT** attempt to disassemble or repair the worklight.
5. **DO NOT** leave the worklight unattended when switched on.
6. **NEVER** aim the beam at any person or an object other than the work piece.

---

## CHARGING USING THE USB CABLE

---

Charge the battery pack before using the lamp for the first time.

1. Open the protective cover and insert the charging lead into the charging socket and the other end into a suitable USB socket or the 3-pin mains adapter plug supplied.
2. Plug the adapter into a suitable mains outlet and switch on.

When the battery is fully charged the three LED indicators all illuminate (The red light, yellow light and green light will light up in sequence).

When charged, remove the charging cable and close the protective cover to protect from water.

**NOTE:** The LED indicators will show only red when the battery pack is run down and needs recharging.

- CHARGING TIME- 5-6 hours

To ensure maximum life from the battery, recharge after every use if possible and thereafter, once every three months. **ALWAYS** avoid leaving the battery in a state of discharge which would lead to reduced performance and to premature battery failure.

The worklight should not be used while using the charging cable.

**NOTE:** If the battery requires replacement take the unit to your CLARKE dealer.



## ADJUSTMENT & USE

The LED work light's stand is adjustable. Loosen the locking knobs on both sides and adjust the stand to the desired position and re-tighten the knobs.

The worklight head can be tilted to the required angle.

### SWITCHING ON

1. Press the red button (1) once to turn on 100% brightness
1. Press a second time to turn on 50% brightness
2. Press a third time to make the lamp flash (S-o-S) continuously.
3. Press a fourth time to turn off.
4. Position the worklight near the work.  
Adjust the stand to direct the light beam.



**CAUTION: DO NOT LOOK DIRECTLY INTO THE LAMP WHEN SWITCHED ON AS THIS CAN DAMAGE YOUR EYES.**

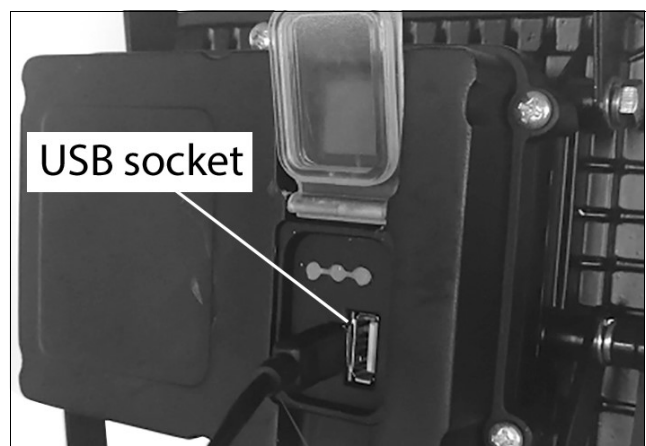
### DISCHARGING (RUNNING) TIME:

- About 3 hours at 100% brightness
- Approx 5 hours at 50% brightness

### USB OUTPUT

The USB output socket can be used to power all kinds of devices which can be charged by a USB cable such as mobile phones, MP3/MP4, Bluetooth headset etc.

**NOTE:** The USB output will stop automatically if the total working current of the total connected devices exceeds the permitted limit.



---

## CARE & STORAGE

---

1. When not in use, switch off & unplug from the USB cable.
2. Store in a dry place, out of reach of children. **DO NOT** leave it exposed to the elements & avoid direct sunlight, direct heat, rain/moisture etc.
3. Keep the external surfaces clean. Avoid impact damage & **DO NOT** allow this product to come into contact with abrasive or corrosive materials such as solvents which will damage the finish. Use a dry cloth to wipe over the lamp components.
4. The LED light source cannot be replaced but has a life expectancy of approximately 30,000 hours.
5. **DO NOT** attempt to replace or change or the LEDs if the protective glass is cracked or broken it must be replaced before the work light is used again.
6. **DO NOT** attempt to repair or modify this product or attempt any electrical repair yourself. Consult the CLARKE Service Department.

## BATTERY USE AND CARE

1. Recharge only with the charging cable supplied.
2. Under abusive conditions, liquid could be lost from the battery; avoid contact. If contact accidentally occurs, flush with water. If liquid contacts eyes, additionally seek medical help. Liquid ejected from the battery may cause irritation or burns.

---

## ENVIRONMENTAL RECYCLING POLICY

---



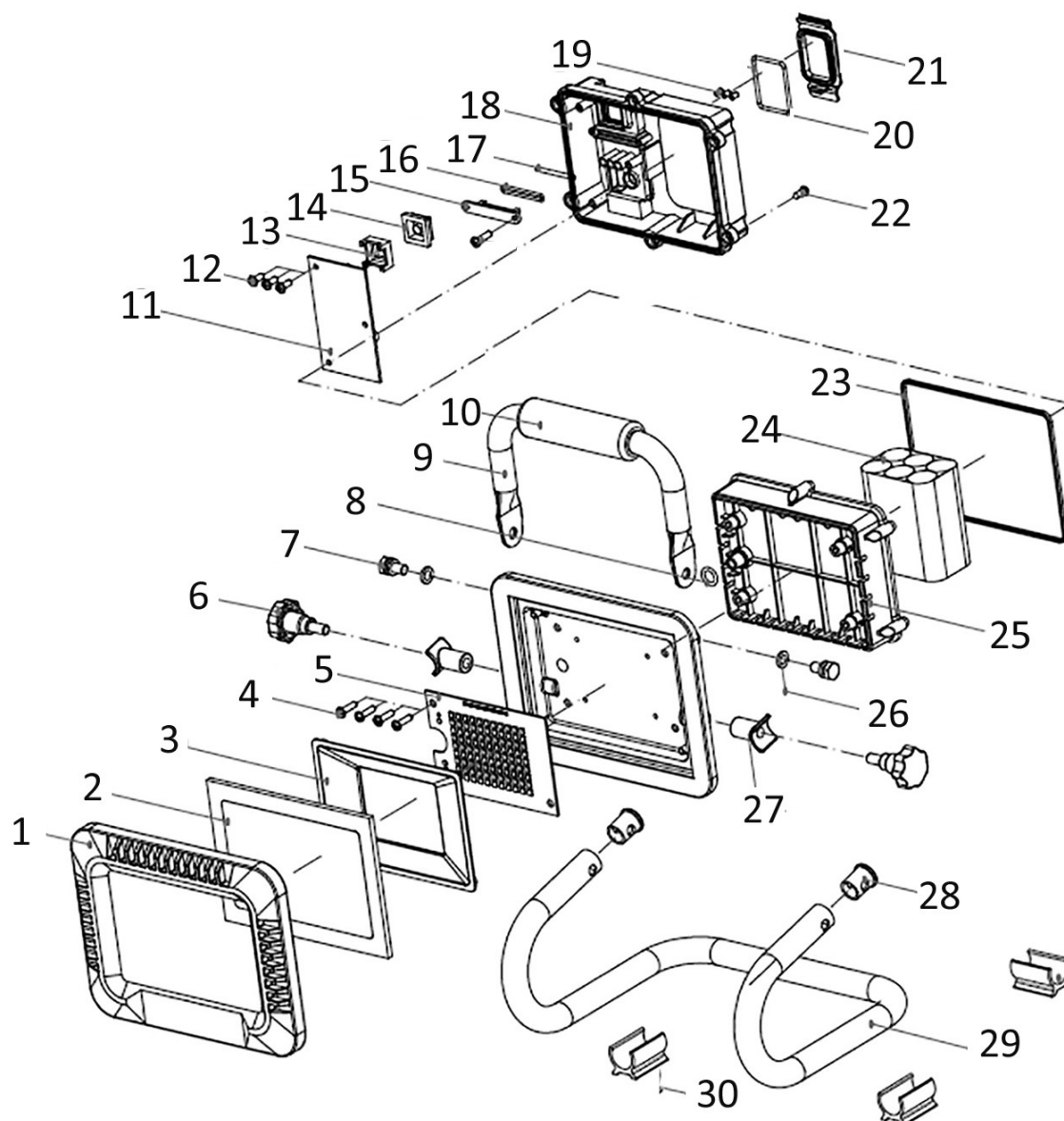
Do not dispose of this product with general household waste. All tools, accessories and packaging should be sorted, taken to a recycling centre and disposed of according to the laws governing Waste Electrical and Electronic Equipment.

Through purchase of this product, the customer is taking on the obligation to deal with the WEEE in accordance with the WEEE regulations in relation to the treatment, recycling & recovery and environmentally sound disposal of the WEEE.

In effect, this means that this product must not be disposed of with general household waste. It must be disposed of according to the laws governing Waste Electrical and Electronic Equipment (WEEE) at a recognised disposal facility.

The Lithium Ion battery falls under the Waste Batteries and Accumulators Regulations 2009 and should be disposed of in a controlled manner if necessary.

# COMPONENT PARTS



1	Face frame
2	Tempered glass 4mm
3	Reflector
4	Screw ST4 x 12
5	LED panel
6	Angle adjusting knob
7	Nut M4x8
8	Sealing washer
9	Portable handle
10	Handle sleeve

11	PCB
12	Screws ST3x8
13	Switch bracket
14	Switch cap
15	Press plate
16	Sealing ring
17	Roller pin
18	Rear housing
19	Lamp guide
20	Sealing ring

21	Waterproof cap
22	Screws ST3.5x12
23	Sealing ring
24	Battery pack
25	Battery box
26	Flat washer 6
27	Connecting sleeve
28	Pipe plug
29	Stand
30	Foot pad

# DECLARATIONS OF CONFORMITY



Hemncill Street, Epping, Essex, CM16 4LG

## DECLARATION OF CONFORMITY

This is an important document and should be retained.

We hereby declare that this product(s) complies with the following legislation:

*The Batteries and Accumulators (Placing on the Market) Regulations 2008*  
*The Electromagnetic Compatibility Regulations 2016*  
*The Electrical Equipment (Safety) Regulations 2016*  
*The Restriction of the Use of Certain Hazardous Substances in Electrical and Electronic Equipment Regulations 2012*

The following standards have been applied to the product(s):

EN IEC 61000-3-2:2019/A1:2021, EN IEC 55015:2019/A1:2020, IEC 62321-5:2013, EN 61547:2009,  
EN 61347-1:2015+A1:2021, EN 61000-3-3:2013/A1:2019, IEC 62321-7-1:2015, IEC 62321-7-2:2017,  
IEC 62321-4:2013 AMD1:2017, IEC 62321-3-1:2013, EN 62321-3-1:2014, EN IEC 61000-3-2:2019,  
EN 61347-2-13:2014+A1:2017, EN 62321-2:2014, IEC 62321-6:2015, IEC 62321-8:2017,  
EN 62493:2015

The technical documentation required to demonstrate that the product(s) meet(s) the requirement(s) of the aforementioned legislation has been compiled and is available for inspection by the relevant enforcement authorities.

The UKCA mark was first applied in: 2024

Product Description: LED Light  
Model Number(s): SMD2000R  
Serial/Batch Number: Refer to product/packaging label  
Date of Issue: 16/12/2024  
Signed:

J.A. Clarke  
Director

SMD2000R UKCA Doc 121624

Page 1 of 1



Fitzwilliam Hall, Fitzwilliam Place, Dublin 2

## DECLARATION OF CONFORMITY

This is an important document and should be retained.

We hereby declare that this product(s) complies with the following legislation:

*Battery Directive*  
*Electromagnetic Compatibility Directive*  
*Low Voltage Directive*  
*Restriction of Hazardous Substances (RoHS) Directive*

The following standards have been applied to the product(s):

EN IEC 61000-3-2:2019/A1:2021, EN IEC 55015:2019/A1:2020, IEC 62321-5:2013, EN 61547:2009,  
EN 61347-1:2015+A1:2021, EN 61000-3-3:2013/A1:2019, IEC 62321-7-1:2015, IEC 62321-7-2:2017,  
IEC 62321-4:2013 AMD1:2017, IEC 62321-3-1:2013, EN 62321-3-1:2014, EN IEC 61000-3-2:2019,  
EN 61347-2-13:2014+A1:2017, EN 62321-2:2014, IEC 62321-6:2015, IEC 62321-8:2017,  
EN 62493:2015

The technical documentation required to demonstrate that the product(s) meet(s) the requirement(s) of the aforementioned legislation has been compiled and is available for inspection by the relevant enforcement authorities.

The CE mark was first applied in: 2024

Product Description: LED Light  
Model Number(s): SMD2000R  
Serial/Batch Number: Refer to product/packaging label  
Date of Issue: 16/12/2024  
Signed:

J.A. Clarke  
Director

SMD2000R CE Doc 121024

Page 1 of 1

# A SELECTION FROM THE VAST RANGE OF

# Clarke®

## QUALITY PRODUCTS



**AIR COMPRESSORS**  
From DIY to industrial, Plus air tools, spray guns and accessories.

**GENERATORS**  
Prime duty or emergency standby for business, home and leisure.

**POWER WASHERS**  
Hot and cold, electric and engine driven - we have what you need

**WELDERS**  
Mig, Arc, Tig and Spot. From DIY to auto/industrial.

**METALWORKING**  
Drills, grinders and saws for DIY and professional use.

**WOODWORKING**  
Saws, sanders, lathes, mortisers and dust extraction.

**HYDRAULICS**  
Cranes, body repair kits, transmission jacks for all types of workshop use.

**WATER PUMPS**  
Submersible, electric and engine driven for DIY, agriculture and industry.

**POWERTOOLS**  
Angle grinders, cordless drill sets, saws and sanders.

**STARTERS/CHARGERS**  
All sizes for car and commercial use.



## PARTS & SERVICE:

## 0208 988 7400

**Parts Enquiries**  
[Parts@clarkeinternational.com](mailto:Parts@clarkeinternational.com)

**Servicing & Technical Enquiries**  
[Service@clarkeinternational.com](mailto:Service@clarkeinternational.com)

SALES: UK 01992 565333 or Export 00 44 (0)1992 565335

**Clarke® INTERNATIONAL** Hemnall Street, Epping, Essex CM16 4LG  
[www.clarkeinternational.com](http://www.clarkeinternational.com)